



LUND
UNIVERSITY

RENT Conference, 15–17 November 2017

Practical information

STEN K. JOHNSON CENTRE FOR ENTREPRENEURSHIP
LUND UNIVERSITY | SWEDEN

REGIA ACADEMIA CAROLINA



RENT Conference 2017

Welcome to Lund and the XXXI RENT Conference

In November 2017 we would like to welcome all of you to the RENT Conference and the lovely university city of Lund.

As usual at the RENT Conference, submissions of papers covering any aspect of entrepreneurship and small businesses are welcome. However, the theme of the conference this year will be "Relevance in Entrepreneurship Research". Traditionally, entrepreneurship and small business research has been regarded as a practical and relevant field, offering knowledge to be used to solve various societal problems including job creation, the funding of new companies and industries, as well as regional development. As the field is becoming more and more institutionalised, the academic rigour in research has been emphasised at the expense of relevance, triggering an intense frustration among many entrepreneurship and small business scholars. A gap between relevance and rigor in our research has emerged – an issue that will be discussed when we meet at the RENT Conference in Lund 2017.

The Conference Team
Sten K. Johnson Centre
for Entrepreneurship



Hans Landström



Marie Löwegren



Lottie Olsson
Norrsén



Craig Mitchell



Maria Pihel

The city of Lund

Dating back to 990 Lund is one of the oldest cities in Sweden. It is a city of contrasts where 1 000 years of history blend with modern knowledge and ideas. In Lund, you find the charm of a small picturesque, cobblestone street city, alongside the attractions of a major city including shopping, restaurants and cultural events.

The University has a strong influence on Lund, with several university buildings located in the heart of the city. Lund Cathedral, dating back to 1145, is a focal point located in the city centre in the area known as Lundagård – which is also the location of the RENT Conference 2017.

Lund really is a student city. A large part of its 120 000 inhabitants are accounted for by Lund University students who, consequently, have a significant impact and contribute to its youthful, laid-back atmosphere. The young population influences all aspects of life in Lund, from the daily rhythm, to city planning, pubs and bars, museums and countless cultural and leisure activities. The combination of old traditions and history together with the bustling student life, strong academic emphasis and focus on innovation makes Lund an ideal place for the RENT Conference 2017.

Lund University

Lund University was established in 1666, and has a long and vibrant history covering almost 350 years of teaching. It has evolved from just a few hundred students and professors being paid in meat and grain into its present form, with around 41 000 students and 7 500 employees contributing to its position of excellence in international teaching and research.

Prepared for both – *Ad utrumque* – is Lund University's motto, referring to the book and the sword in the University seal from the 17th century. Today the expression can be applied to a number of the dual values for which the University stands, such as tradition and innovation or breadth and depth.

The University is ranked among the top 100 universities in the world, providing education and research in engineering, science, law, social sciences, economics and management, medicine, humanities, theology, and fine and performing arts. At the University, complex problems and global challenges are tackled to ensure that knowledge and innovations benefit society. Over the years, a large number of commercial activities based on Lund University research have been launched, including some of the most well-known such as Tetra Pak, Gambro, Bricanyl, Proviva, Oatley, Qliktech and Axis.

Visiting the city of Lund

Lund is located close to Malmö (Sweden's 3rd largest city) in the south part of Sweden, close to both Denmark and Germany. The main campus buildings of Lund University are located in the city centre of Lund, approximately a 5–10 minute walk from the train station.



Copenhagen Airport - the closest international airport to Lund

The closest international airport to Lund is Copenhagen Airport (also known as "Kastrup"), in Denmark. The journey time by train from the airport to Lund is about 40 minutes, and the trains leave every 20 minutes. The journey takes you over the Öresund Bridge connecting Denmark to Sweden.

Train tickets can be purchased from the Skånetrafiken ticket machines in the arrivals hall at Copenhagen Airport, near the escalators going down to the train platform. You can pay using a debit/credit card, and if you buy a ticket to Lund it will also be valid on the bus in Lund itself. It is not possible to buy tickets on the trains. The trains leave from platform 1 at Copenhagen Airport, and you should choose trains in direction to either Gothenburg, or Kalmar, or Karlskrona.

Please note that there is a passport control on the train platform at Copenhagen Airport. There is also a passport control at the first stop (Hyllie) on the Swedish side. Make sure to always bring a valid passport or ID-card when travelling between Denmark and Sweden.

Malmö Airport

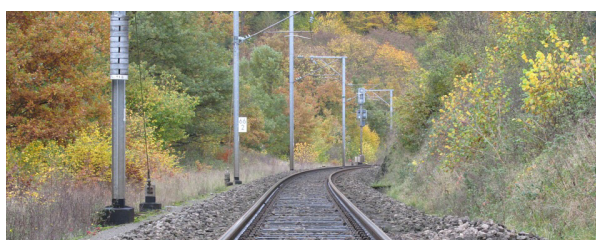
The closest local airport to Lund is Malmö Sturup. It has some international flights from destinations within Europe and flights from other Swedish airports including Stockholm. There are bus connections between Lund and Malmö Sturup airport (Flygbuss) or you can get a taxi to Lund.



Trains from Berlin, Oslo, Stockholm and Gothenburg

Lund is located on the main railway line from Malmö to several different destinations such as Berlin, Oslo, Stockholm and Gothenburg. Travel time from Stockholm is about 4 hours on the express train 'X2000' or 6-7 hours on 'Intercity' trains. Gothenburg (Göteborg in Swedish) is approximately 250 km north of Lund. There are regular trains between Gothenburg and Lund. The journey time is approximately 3-4 hours. To book

tickets or find out more about destinations and travel times please visit the SJ and Snälltåget websites.



Car and passenger ferries from Germany, Poland, Denmark and the UK

There are car and passenger ferry connections to southern Sweden from Germany with Scandlines and TT-Line, and from Poland with Polferries. There are also connections via Denmark from Germany and the UK. To travel by car over the Öresund Bridge from Denmark there is a toll. Lund is conveniently reached from the main roads E6 and E22.

Taxi

From Malmö to Lund by taxi, the cost is approximately SEK 300. The trip takes approximately 20 minutes. A trip in the city of Lund is cheaper, and should cost no more than 150 SEK. Taxis normally accept all major credit cards.

Main taxi companies:

Taxi Lund: +46-(0)46-12 12 12

Taxi Skåne: : +46 -(0)40 - 330 330

Dalby Taxi: +46 (0)46 - 20 22 80

Sverige Taxi: +46 (0)20 – 20 20 20

Taxi Kurir: +46(0)771-86 00 00

Bus transport

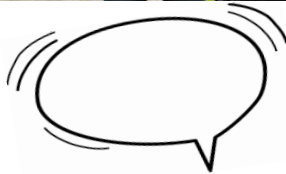
The easiest way to find your way and to purchase tickets is to use the Skånetrafiken app, which is available both for android and iPhone. However, all pre-booked accommodation and the conference, including the dinner, is located within walking distance.

If you are attending the pre-conference (15 November) bus no. 1 (towards Östra torn) and bus no. 6 (towards Östra Linero) from the central railway station will take you to "Lund Sparta", which is the busstop right at the main entrance of Lund University School of Economics and Management. Find more information on www.skanetrafiken.se.

Welcome to Sweden

Population

- 10 million
- Multicultural:
15% are born outside of Sweden,
1 out of 5 children has got a family with roots outside of Sweden.



Language

- Swedish is the official language, but most people are fluent in English
- 5 minority languages: Finnish, Meänkieli, Sapmi (Sami language), Jiddish, Romani



Important words and concepts

- Fika - also a verb (take a fika). An important part of the national culture: usually a cup of coffee or tea with a cookie or a sweet bun (can also be a glass of juice and a sandwich)
- Lagom - an important and often-used word in Sweden. Meaning good enough, or just right, it sums up Swedish cultural and social ideals of equality and fairness



Currency

- Svensk krona (SEK)
- 100 SEK = approx. €10.50

The country

- 69% of Sweden is forrest.
- <3% of the land area is built on.
- 86% of Swedes lives in cities
- Long country: From Lund it is as far to go to the northest part of Sweden as it is to go to Rome.
- 22 inhabitants/ km²
- 447 435 km²

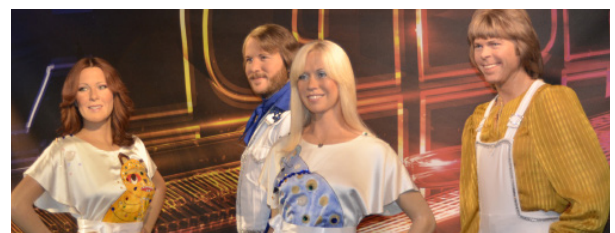


Politics

- Sweden is a parliamentary democracy
- Royal family with no political power
- Was the first in the world to introduce freedom of the press (1766)

Cultural exports

- The worlds biggest exporter of pop music in relation to GDP
- Stieg Larsson and Henning Mankell are big names on the Nordic noir literature scene - Mankell's stories are taking place in Ystad, Scania.



Conference location

RENT 2017

- AF Borgen
- University Building
- Grand Hotel Lund

**Pre-conference, Thursday
15th November**

- Lund University School of Economics and Management
- Sten K. Johnson Centre for Entrepreneurship

Accommodation

- University Guest House
- Grand Hotel
- Hotel Concordia Stayat
- Lund
- Lilla Hotellet

Pre-booked accommodation

4-STAR HOTEL

GRAND HOTEL

www.grandilund.se

Single room: 2095 SEK/night Booking reference: 313472

CONCORDIA

www.concordia.se

Single room: 1350 SEK/night

Booking reference: "RENT November 20171115"

3-STAR HOTEL

STAY AT

www.stayat.se

Single room: 1245 SEK/night

Booking reference: "-RENT151117LUN"

NON-RATED HOTEL

LILLA HOTELLET

www.lillahotellet.com

Single room: 900 SEK/night Booking reference: RENT 2017

UNIVERSITY GUEST HOUSE

<http://www.luaccommodation.lu.se/university-guest-house-0>

Single room: 500 SEK/night

Booking: Contact Maria Pihel, maria.pihel@fek.lu.se, to get more information.

Note that the University Guest House is located close to the Lund University School of Economics and Management – 20-30 minutes walking distance from the main conference area.

Bus no. 1 and 6 takes you downtown.

Pre-conference 15 November

Seminar	Time	Responsibility	Contents	Where
Doctoral Workshop	9.00-17.00	Helle Neergard		Sten K. Johnson Centre for Entrepreneurship
Professional Development Workshop (PDW)	13.00-15.00	Erno Tornikoski	Progressing in Academy Peer Reviewing	Lund University School of Economics and Management, main building
	13.00-15.00	Caroline Wigren and colleagues	New Directions for Research on Entrepreneurship and Embeddedness	
	15.00-17.00	Tiago Ratinho	How Are We Supporting Entrepreneurs?	
	15.00-17.00	Malin Brännback and colleagues	Disadvantage Entrepreneurship	
Post-doc Writing Workshop (PDWW)	15.00-18.00	Cristina Diaz		Sten K. Johnson Centre for Entrepreneurship
ECSB Policy Forum	15.30-18.30	Hans Landström Marie Löwegren	How to make research on entrepreneurship more relevant?	University Building
Reception	18.30			University Building

RENT Conference 2017, 16-17 November

All sessions will be held at AF Borgen

Time	Thursday 16 November	Friday 17 November
8.30	Introduction and key-note session Key-note speakers: Johan Wiklund, Syracuse University, Ester Barinaga, Copenhagen Business School and Jan Erik Solem, Polar Rose and Mapillary	Parallel sessions
12.30	Parallel sessions	
13.30	Parallel sessions	Parallel sessions ECSB Business Meeting
17.30		<i>Conference ending 16.00</i>
19.30	Conference Dinner	

Key Attractions

- **Domkyrkan** is Lund's famous cathedral, consecrated in 1145. It features an unique and impressive astronomical clock, dating from 1424.
- **Kulturen** is an open-air museum, founded in 1892, which shows how people have lived and worked in Sweden through the ages.
- The **Skissernas Museum** - Museum of Artistic Process and Public Art was founded in 1934 by Ragnar Josephson, Professor of Art History at Lund University, and is a unique art museum focused on the creative process around the conception of public art, featuring sketches, preliminary works and models from prominent artists such as Matisse, Moore, Delaunay, Vasarely, Christo & Jeanne-Claude.
- The Lund University **Historiska Museet**, founded in 1805, is the second largest archaeological museum in Sweden. Among other finds, the collection includes a 7 000 year-old skeleton and the remains of the founder of Lund University: Bishop Peder Winstrup.
- The Lund University **Botaniska Trädgården** (Botanical gardens) in Lund cover 8 hectares and feature around 7 000 different species.
- **Vattenhallen** Science Centre has inspiring and educational workshops, experiments and exhibitions on technology and science. It is a place where children and adults can learn together, so bring your family to one of the exhibitions or astronomy shows in the planetarium.



Emergency information

SOS Alarm

In case of emergency you will reach Ambulance, Fire department and the Police through SOS Alarm. Dial 112.

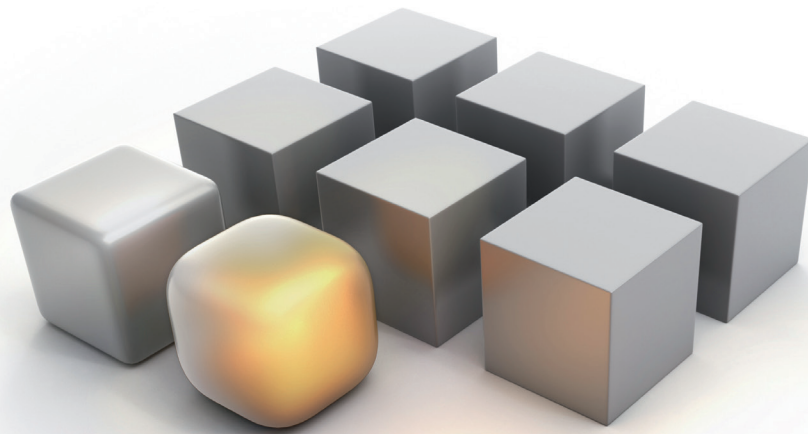
Police

If you need to get in contact with the Police, but do not need immediate assistance, you can reach them at 114 14.

Hospital

The hospital in Lund is located within walking distance from the conference venue.

Their telephone number is: +46 (0)46-17 10 00.



Sten K. Johnson
Centre for Entrepreneurship



Sten K. Johnson Centre for Entrepreneurship

“Advancing entrepreneurship and entrepreneurs through knowledge”

Sten K. Johnson Centre for Entrepreneurship is part of Lund University. The centre operates within the University's three main areas: education, research and external engagement. It was founded after a generous donation from entrepreneur Sten K. Johnson in 2011.

Since 2012 the centre is proud to annually present the European Entrepreneurship Education Award to an individual who have contributed significantly by developing educational perspectives or ways of teaching entrepreneurship, through education, research or external engagement. In connection with the award ceremony in April we host the European Entrepreneurship Education Workshop. Read more at www.entrepreneur.lu.se/en/events/eeew.

The leading research areas at Sten K. Johnson Centre for Entrepreneurship are:

- New venture teams in an entrepreneurship process
- Immigrant entrepreneurship
- The entrepreneurial process
- Entrepreneurial learning and education
- The roots of entrepreneurship research



LUND
UNIVERSITY

www.rent-research.org

LUND UNIVERSITY
www.lunduniversity.se

Sten K. Johnson
Centre for Entrepreneurship
Box 7080
220 07 Lund
www.entrepreneur.lu.se